

Collamat C and S-Series Print-and-ApPLY Systems

versatile modular labellers

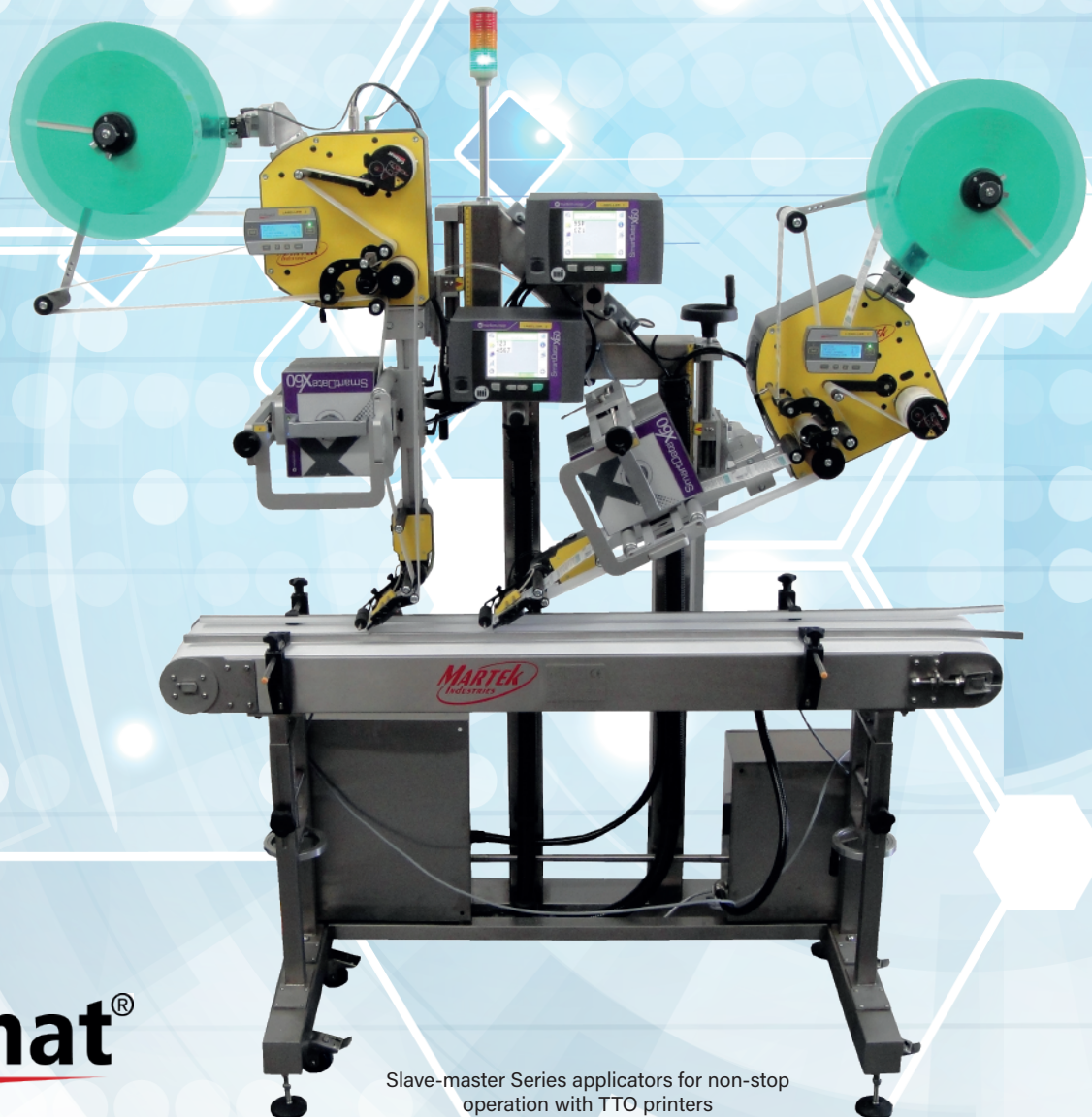
Combining Collamat C-Series and S-series label applicators with a choice of print modules allows a diverse range of print-and-apply applications to be configured.

Collamat applicators offer a choice of application modules, widths, dispense speeds and unwinder options to match specific labelling requirements.

Adding a choice of thermal transfer overprinter, inkjet coder or thermal transfer print engine transforms a versatile label applicator into a print-and-apply solution for a wide range of applications.



C-Series applicator with TTO printer



Slave-master Series applicators for non-stop operation with TTO printers

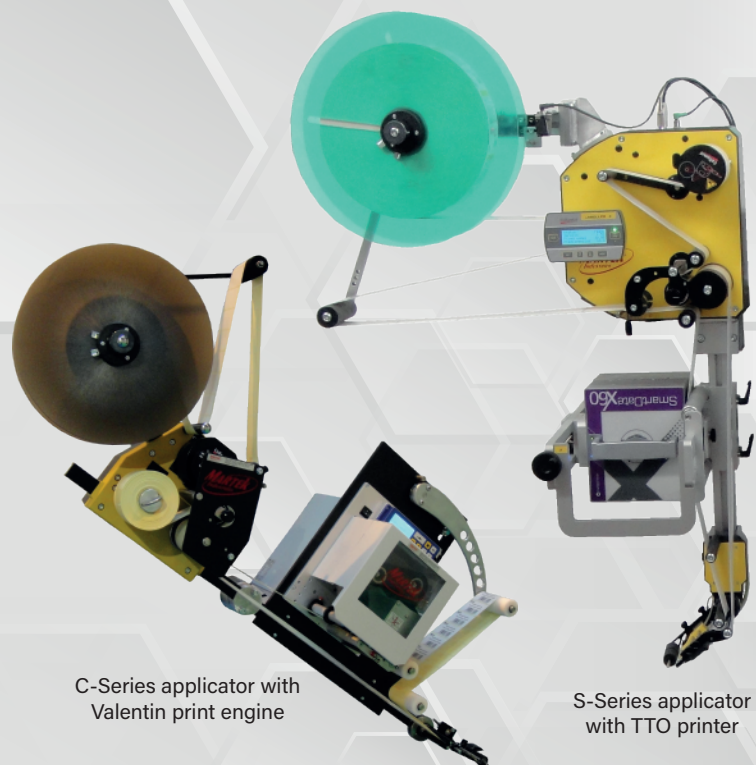
C-Series and S-Series Applicators

Collamat C-Series applicators are ideally suited for the majority of labelling requirements with models for labels up to 95 and 160mm wide and drive units ranging in dispense speed from 15 to 50m/min.

For more demanding applications where very high precision, speed and robustness are required, the Collamat S-Series includes models for labels up to 100, 180 and 250mm wide and for speeds up to 100m/min.

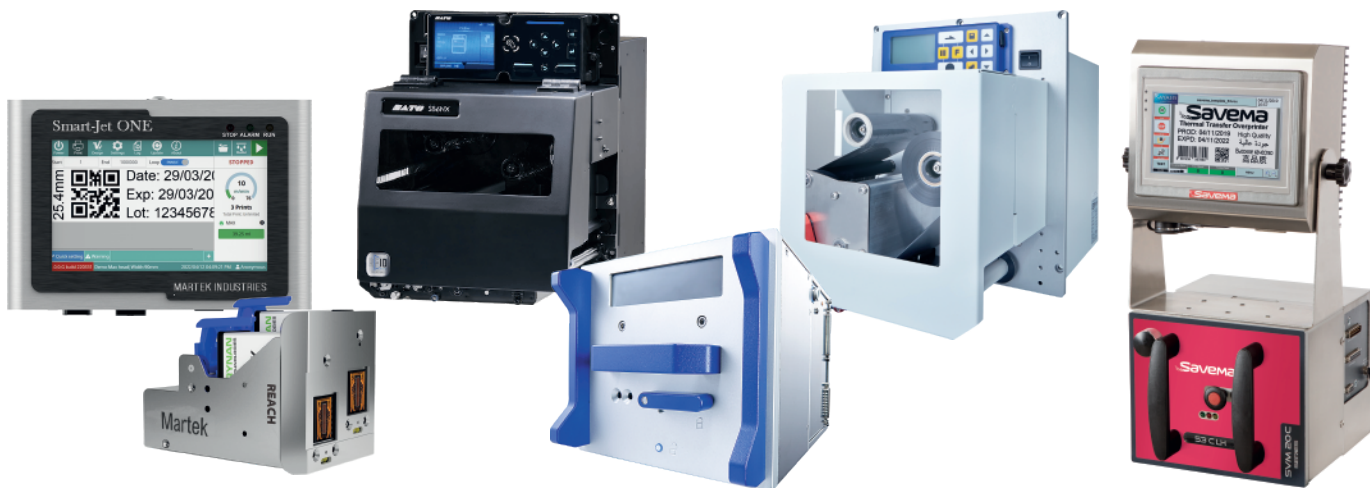
Both ranges feature a range of application modules including roll-on, tamp and electro-magnetically controlled flap applicators for uneven or recessed surfaces.

Systems can be supplied with integrated conveyors or on stands / bracketry for use on existing conveyors or machines.



C-Series applicator with Valentin print engine

S-Series applicator with TTO printer



Print options

Depending on print requirements, a range of print modules can be configured including:

Thermal transfer print engine - If printing the entire label, a thermal transfer print engine can be used to print at low speed for optimum print quality whilst still enabling labels to be applied at high speed. Print engines from all leading manufacturers including SATO, Valentin and Zebra can be used with a choice of 200, 300 and 600dpi resolution.

Thermal transfer overprinter - When overprinting a small portion of labels, a thermal transfer overprinter offers the advantage of only using ribbon for the printed portion of the label avoiding ribbon waste. A wide range of TTO printers can be configured including the Valentin and Savema ranges all with 300dpi resolution and ribbon saving to further reduce ribbon waste.

Smart-Jet ink jet printers - The Smart-Jet range of thermal inkjet (TIJ) printers offers a low-cost option for overprinting labels and is typically used to add batch and expiry information to pre-printed labels. Printheads are available with 12.7 and 25mm print height and up to 6 printheads can be joined to give up to 150mm print height. Fast drying inks ensure no ink smudging.